

# CENTRAL COMMISSION FOR THE NAVIGATION OF THE RHINE (CCNR)

## Different uses of the Rhine vessel certificate *Perspective of the CCNR*

Strasbourg, 23th September 2025

Raphaël WISSELMANN, Chief Engineer

# Rhine Vessel certificate = essential tool to implement Rhine regulations



- Primary objective = Demonstration of compliance with safety requirements
- Used to implement several regulations (police rules, vessel inspection, crew requirements... )
- Certificate used by an important number of stakeholders  
**=> The revision of the model is therefore an important work**

## Some key aspects for the CCNR

- Call for a systematic approach: new boxes to avoid free text that is difficult to read and understand
- Modular approach => fit for purpose



# Revision of model certificate = compatible with CCNR and EU regulatory regimes



**Directive 2016/1629**  
*European Union*

**Rhine Vessel Inspection  
Regulations (RVIR)**  
**CCNR**



Reference to



**ES-TRIN**

= Core technical requirements for  
inland navigation vessels

- Continued harmonization of the two regulatory regimes
- One standard, two certificates valid on Rhine and EU waterways (new vessels after nov 2008)

# Revision of model certificate is an opportunity for a better link with databases

- New model needs to be “digital ready”
- Digitalization offers new possibilities by collecting and storing information in a consistent manner
- CCNR promotes development of inland navigation digitalization, an important pillar of CCNR’s ministerial Mannheim Declaration

## Opportunities

- ⇒ allows statistics to be generated via the database
- ⇒ allows to improve knowledge of inland navigation
- ⇒ supports development of public policies

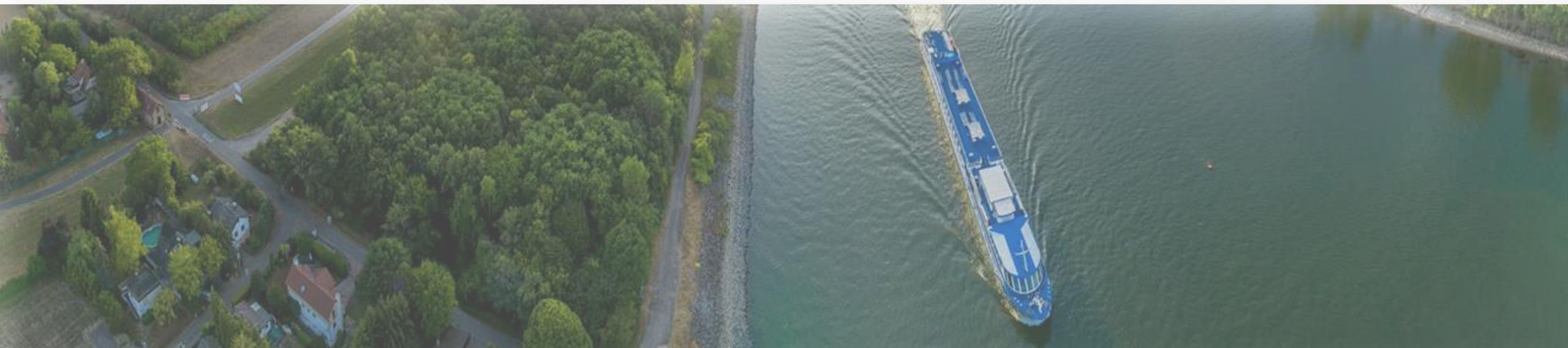
e.g. more information on engines or energy converters in a “database format” enables better monitoring of the greening of the fleet



# A future proof model of Vessel certificate



- Important to foresee a certificate design enabling its evolution
- Possible future needs of new data fields, e.g.
  - systems required for automation
  - ability to be remoted operated
  - alternative fuels ...





THANK YOU FOR YOUR ATTENTION!

Raphaël WISSELMANN  
[r.wisselmann@ccr-zkr.org](mailto:r.wisselmann@ccr-zkr.org)